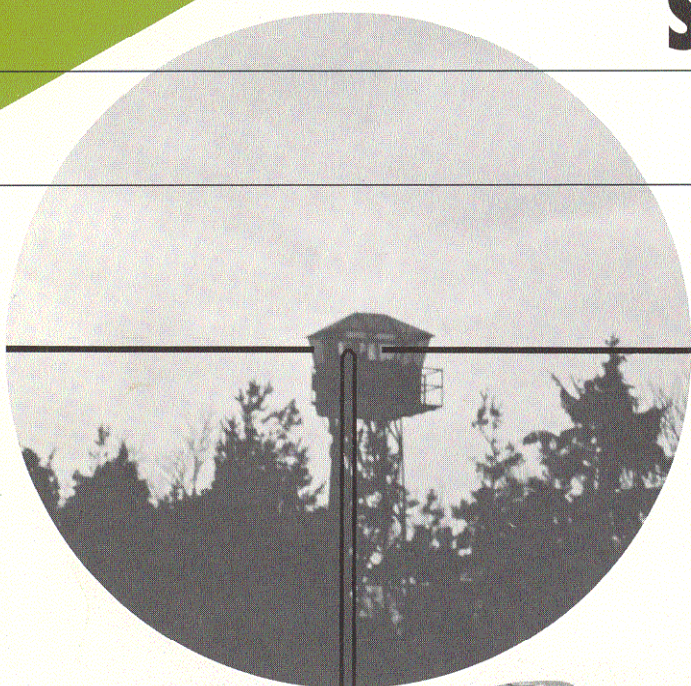




Kern

Sighting Telescope

4 x 24



The Kern Sighting Telescope 4 x 24: A Top-line Optical Product of Proven Quality that conforms to Stringent Military Requirements.

According to specification, and with due consideration of the ammunition used, the Kern Sighting Telescope 4 x 24 can be adapted for mounting on various weapon types and makes, such as:

1

Kern Sighting Telescope 4 x 24 mounted on SIG Stgw 57 automatic rifle

2

Kern Sighting Telescope 4 x 24 mounted on SIG SG 541 automatic rifle

3

Kern Sighting Telescope 4 x 24 mounted on SIG SG 540 automatic rifle

Application

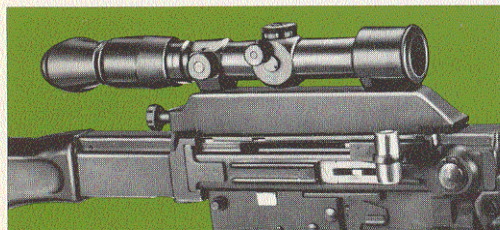
The Kern Sighting Telescope 4 x 24 for sniper rifles and automatic weapons are suitable for police and surveillance assignments as well as for military use.

Brilliant Optical Performance

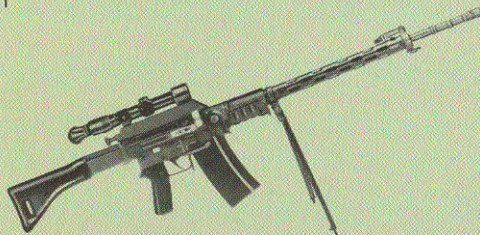
Outstanding image sharpness and contrast, resolution capabilities that exceed those of the human eye together with optimized color correction ensure a brilliant image giving a plastic impression.

A Sighting Telescope that can take Rough Handling

The rugged design is not affected by firing and guarantees a long service life even during permanent use under the toughest conditions.

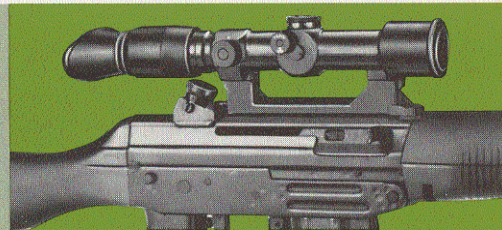


1

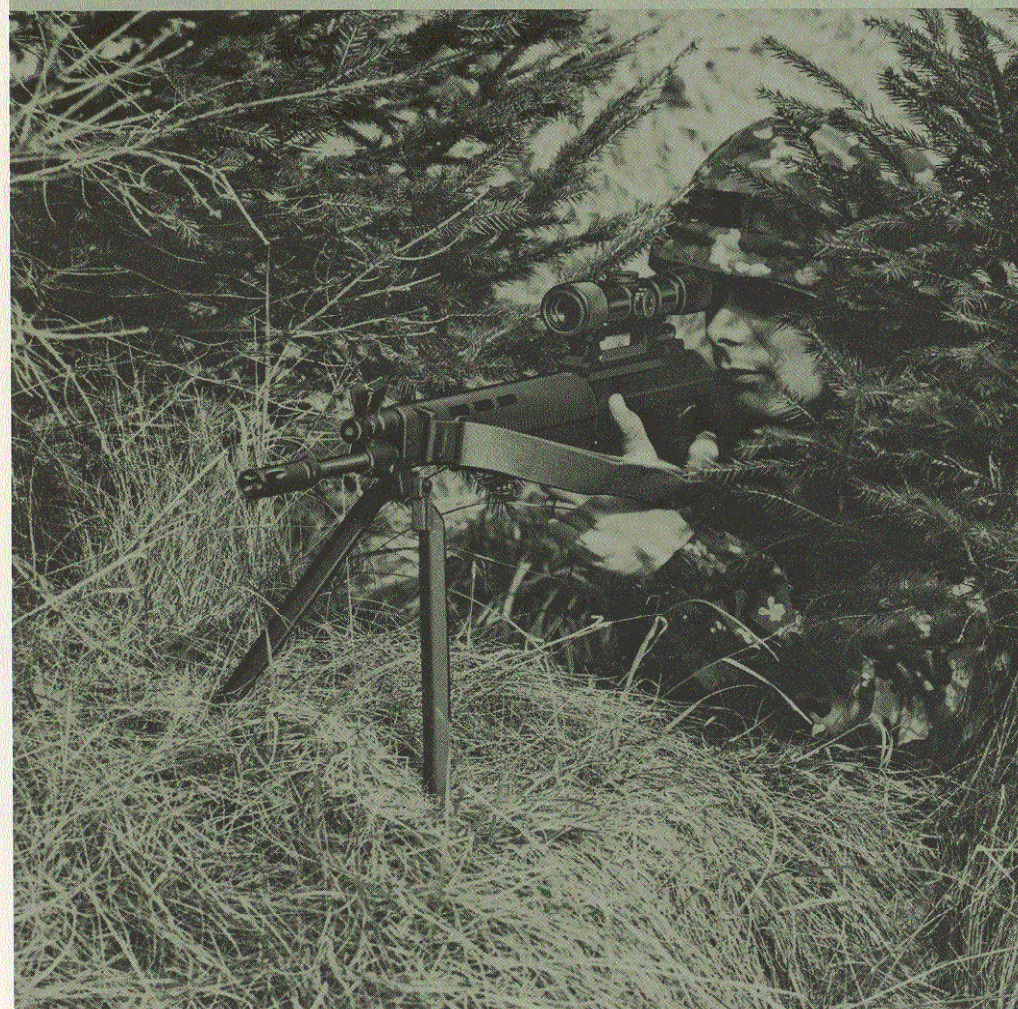


2

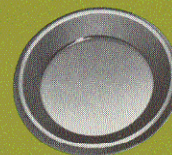
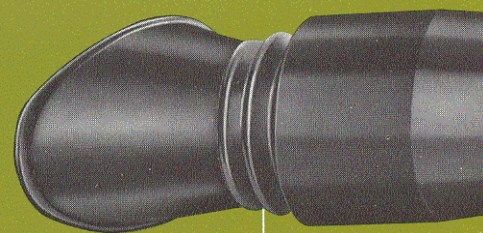
*Zwischenadapter
132.570.0039*



3



*Okularmuschel
132.570.0040*



Soft Rubber Eye Cup

The soft rubber eye cup is anatomically shaped to block extraneous light. It also guarantees optimal position of the exit pupil and increased protection against injuries.

Neutral Density Filter

An additional neutral density filter can easily be inserted into the eye cup in order to provide effective glare protection under intense backlight conditions.

*100.278.0400
132.750.0006
132.700.1053*

Kern Sighting Telescope 4 x 24: Perfected Technology down to the Last Detail

Ruggedized, Dustproof, Water-resistant

Dependable in any environmental conditions.

Ergonomic Shape

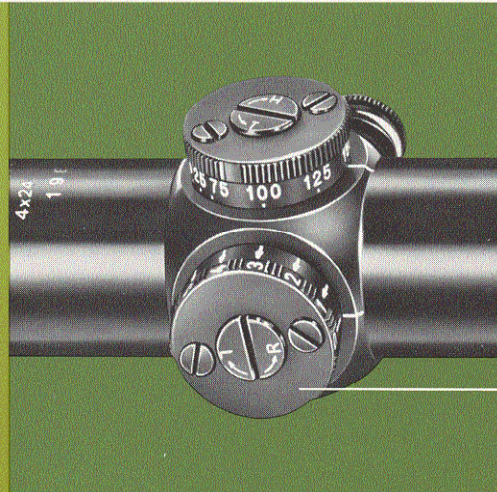
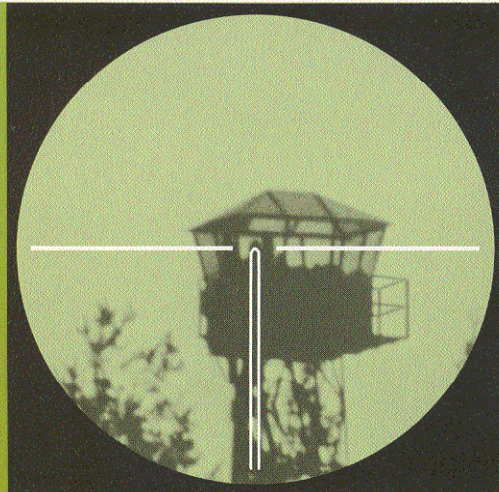
A light, handy sighting telescope that features ergonomically-designed, easily manipulated operating elements.

Coated Optics

Weather-proof, anti-reflection coating on all optical components guarantees an absolute minimum of light loss which results in optimized twilight performance.

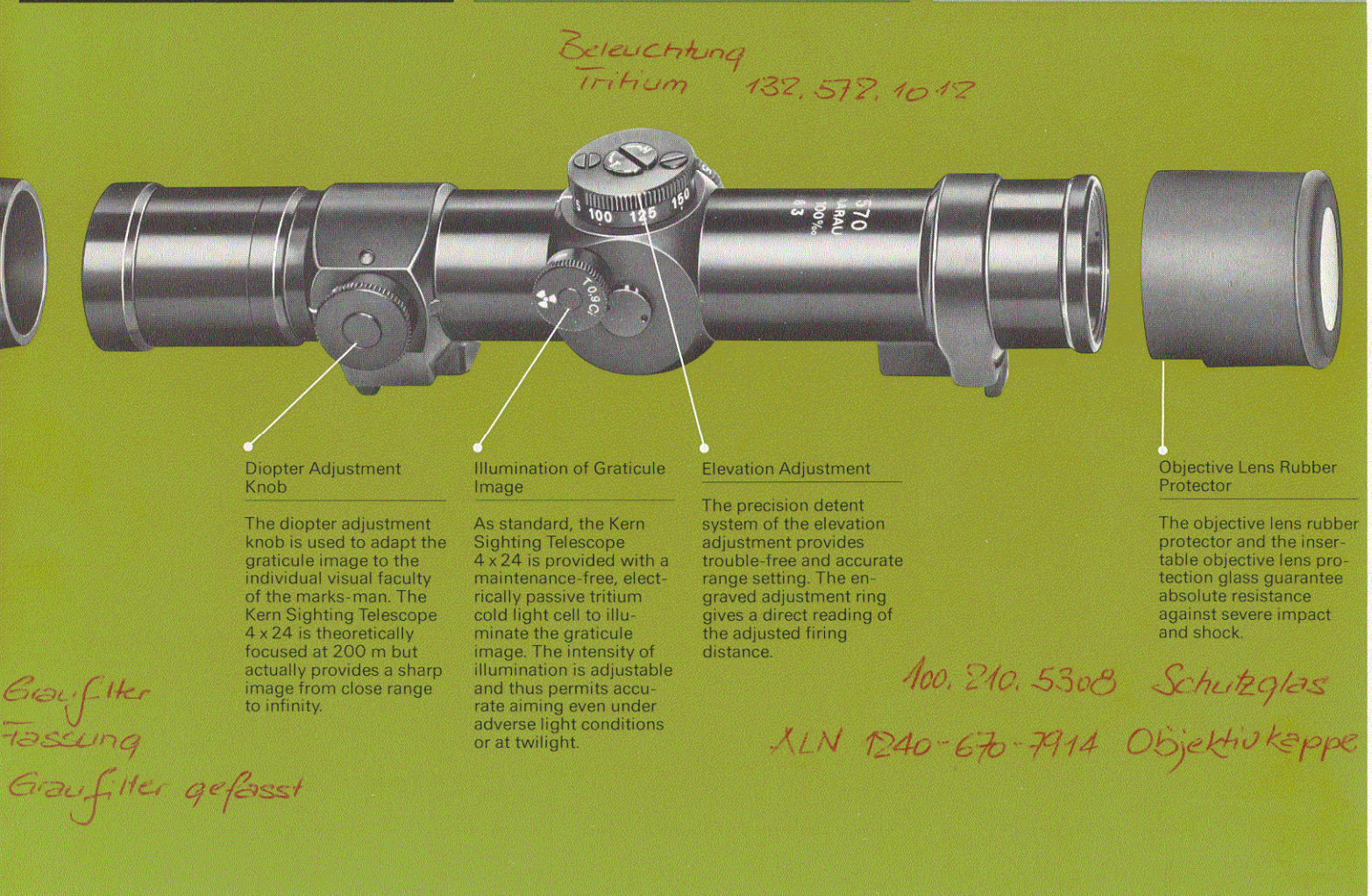
High-precision Optical System

Kern uses materials of the very best quality for all optical and mechanical components. This quality together with well tried design, manufacturing and quality assurance methods results in sighting telescopes of extreme precision.



Lateral Adjustment

The precision detent system of the lateral adjustment allows trouble-free and accurate firing correction. The engraved adjustment ring gives a direct reading of the correction value and the correction direction.



Kern Sighting Telescope 4 x 24: A Kern Quality Optical Product Kern

The standard version consists of the Kern Sighting Telescope 4 x 24 without adapter, eye cup and objective lens rubber protector.

Whenever the latest technologies are applied to the design of military optical instruments, Kern is at the forefront – and has been for decades. In the future, Kern will continue to incorporate scientific knowledge and technical progress in development of new and improvement of existing products while taking into account the individual needs and requirements of the user community.

Kern & Co. Ltd.
Mechanical, Optical and Electronic
Precision Instruments
CH-5001 Aarau, Switzerland
Telephone (064) 25 11 11

Accessories

Various adapters are available for fastening the telescopic sight onto weapons of various types and makes.

Technical Data

Magnification	4 x
Entrance pupil diameter	24 mm
Exit pupil diameter	6 mm
Distance of exit pupil	57 mm
Twilight number	9.8
Field of view at 1000 m	100 m
Field of view in degrees	5.6°
Diopter adjustment range	± 3 diopters
Lateral adjustment	¼ mil per notch
Lateral adjustment range	± 5 mil
Additional adjustment range	± 8 mil
Elevation adjustment	¼ mil per notch
Elevation adjustment range	up to 18 mil
Graticule illumination	T 0.9 Ci tritium cold light cell
Half life	T ½ = 8–10 years
Operating temperature range	– 25 °C to + 50 °C
Storage temperature range	– 40 °C to + 60 °C
Weight	400 g
Dimensions of standard version:	
Height	48 mm
Width	50 mm
Length	210 mm / 285 mm